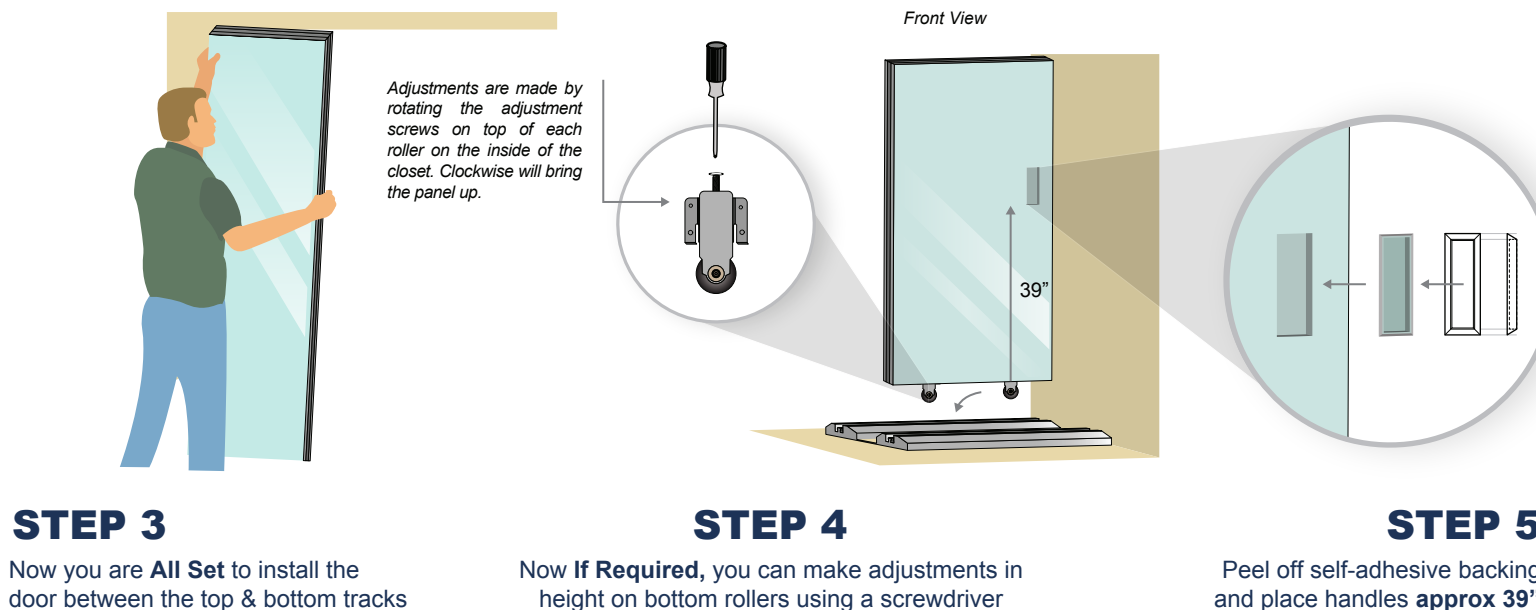
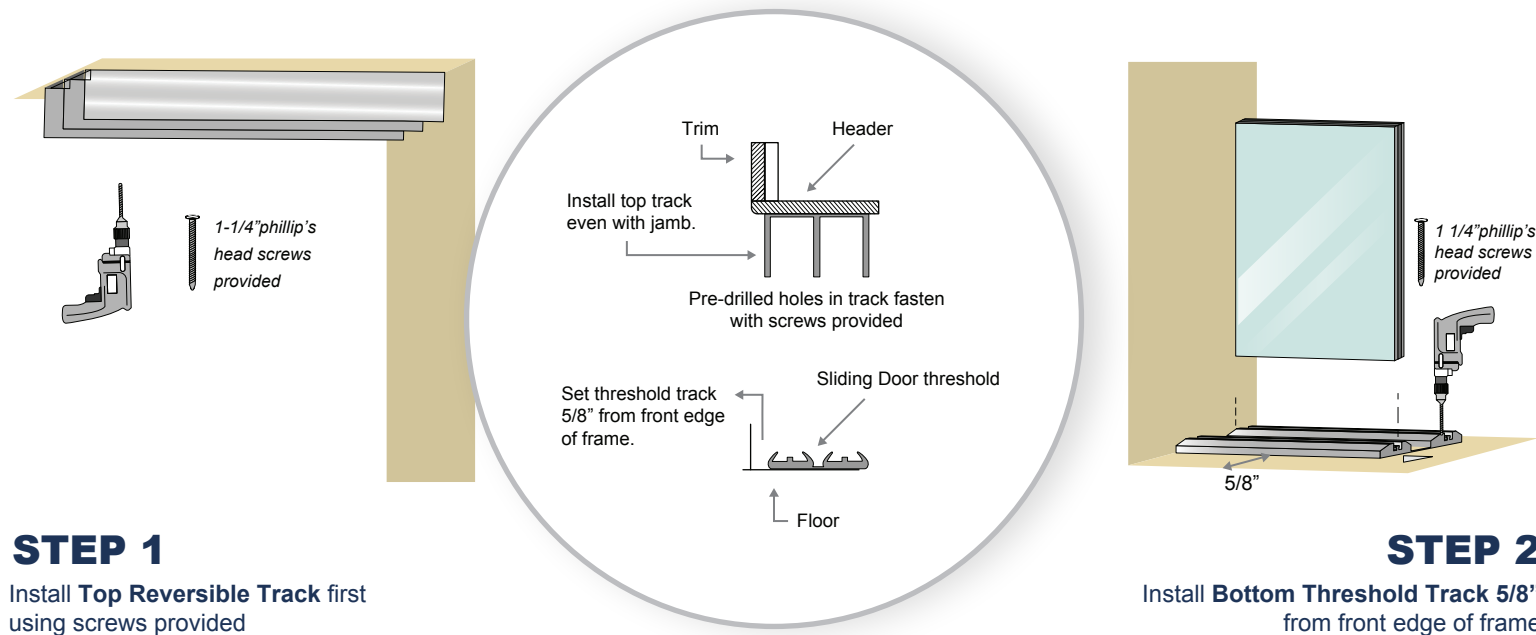
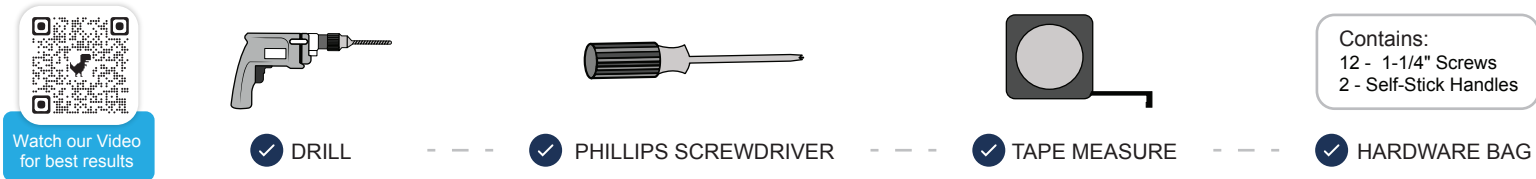


SLIDING DOOR | INSTALLATION GUIDE



OWNER MANUAL + INSTALLATION GUIDE

DEAR CDM CUSTOMER

Welcome to the CDM family! If this is not your first CDM product— welcome back! We are proud to manufacture quality products in our home state of New York for over 60 years. It is our goal that you are completely satisfied with your purchase and that your CDM door performs to your reasonable expectations for its lifetime. We have over 1 million CDM doors installed to this day and the list of happy customers continues to grow. If for any reason you are not completely satisfied, please contact us and let us know what we can do to help.

HAPPY AND WANT TO LET PEOPLE KNOW? 😊

Please take a moment of your time and write a review of your experience. You can login to the retailer's website where you purchased the door, Google or go to our website. Small family business manufacturers like CDM rely on strong reviews and happy customers that spread the news about our wonderful products. If for any reason you feel like you can't give us a positive review, please contact us at sales@customdoorandmirror.com and let us know what we can do to get you added to the list of happy and completely satisfied CDM customers.

CARE AND MAINTENANCE INSTRUCTIONS

Before installation, doors should always be stored flat and on a level surface. Doors should never be leaning against a wall or not properly supported, as this may cause warpage, especially if doors are acclimating to a new interior climate/humidity level. Door hinges and rollers should be lubricated every 6 months. We recommend a dry lubricant. Look for a Teflon or Dry lubricant. Spray each hinge sparingly from both front and back and wipe off excess. A little will go a long way. The doors will work very smoothly for their lifetime if they are properly lubricated.

MIRROR MAINTENANCE

DO NOT USE AN AMMONIA BASED CLEANING PRODUCT. These will shorten the life of the mirror by creating a dark edge or dark spots over time. The most important thing to remember is to use an alcohol or water based cleaner. There are many fine aerosol and liquid products at your local retailer.

LIFETIME HARDWARE WARRANTY

The Custom Door and Mirror (CDM) Warranty is a statement of confidence to our customers to the reliability of CDM's products, which are designed and manufactured to the highest standards in quality, appearance and durability. This warranty reflects a tradition of excellence and a commitment to superior manufacturing and innovative design dedicated to you, our customer. This warranty is our pledge to you that we will proudly stand behind our products. CDM warrants our hardware for its lifetime to be free from defects in materials and craftsmanship. This Lifetime Warranty applies to the original owner/purchaser of the CDM product and is not transferable. This includes hardware, hinges, rollers, guides and handles for the natural life of the product. CDM reserves the right to repair, replace, or refund the original purchase price, at its option, any hardware found to be defective. Proof of purchase required.

ADDITIONAL WARRANTY

In addition, CDM warrants the remaining components to be free from defects in materials and workmanship upon inspection, and proof of purchase, will repair, replace, or refund the original purchase price, at its option, if any components are deemed to be defective by a representative of CDM. This includes door panels, tracks, trim, etc. There are no additional warranties, expressed or implied, which extend beyond the description on the face hereof, including the implied warranty of fitness and the implied warranty of merchantability.

WHAT THIS WARRANTY DOES NOT COVER

Broken mirrors, shipping damage, negligence, improper handling/storage, or any costs associated with repairing or replacing a product found to be defective. This warranty is applicable to original owner and only when the products covered by it have been installed in accordance with the recommended written installation instructions supplied by CDM and with established building practices. In addition, the warranty is applicable only if the CDM products have been accorded treatment which is considered good practice in the building industry regarding storage and maintenance and have been subjected only to normal use. Instances that involve improper installation, accident, natural disaster, corrosive air, outdoor use, or product that has been altered will not be covered. Because CDM cannot control the way its products are handled after leaving its premises, this warranty does not apply to the finish or other damage occurring during shipment. Some states do not allow the exclusion or limitation of incidental or consequential damages, so the above limitation or exclusion may not apply to you. This warranty bestows certain legal rights, and you may also have other rights which vary from state to state.



CUSTOM DOOR
& MIRROR, INC.

BI-FOLD DOOR INSTALLATION GUIDE

WATCH OUR DIY VIDEO

For the best results, watch our videos. scan this QR Code and select the type of door you are installing.

Just in case: <http://customdoorandmirror.com/installation-video>

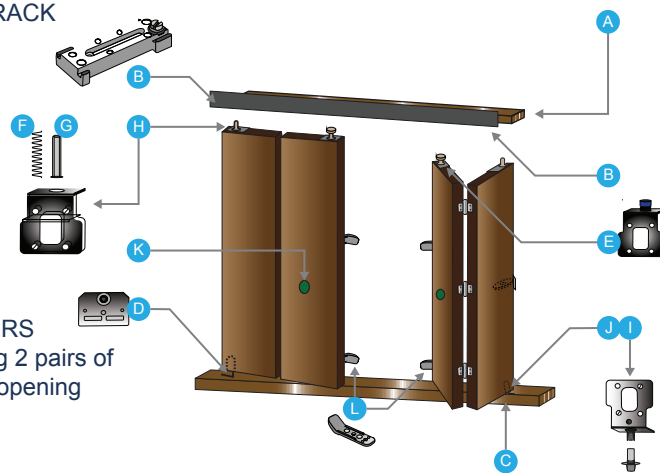


HARDWARE INCLUDED

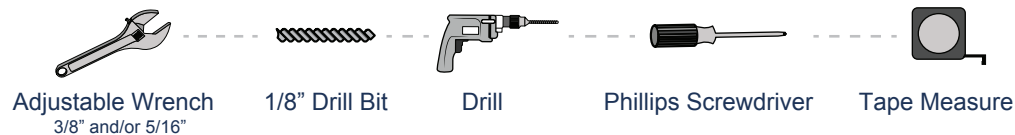
- A WOOD BLOCK & METAL TRACK
- B PIVOT BLOCK
- C OAK SADDLE
- D METAL FLOOR PLATE
- E ROLLER BRACKET
- F SPRING
- G TOP PIVOT PIN
- H TOP PIVOT BRACKET
- I ADJUSTING BOLT
- J BOTTOM PIVOT BRACKET
- K HANDLE
- L 2 - PLASTIC DOOR ALIGNERS

*Only used when installing 2 pairs of bi-fold doors in the same opening

- M 2 - 2" WOOD SCREWS
- N 24 - 5/8" #8 SCREWS

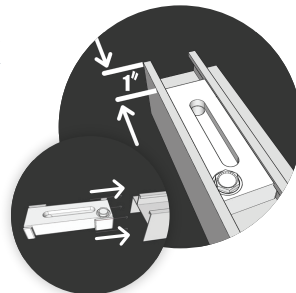


TOOLS REQUIRED



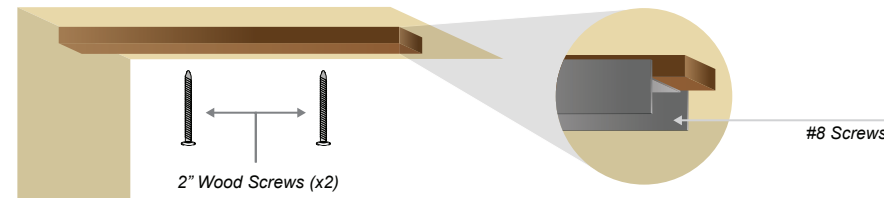
STEP 1 DETERMINE YOUR PIVOT & PREP THE TRACK

Slide and loosely secure plastic **PIVOT BLOCK** B onto **METAL TRACK** A. Ensure that the hole in the Pivot Block goes in the track closer to the edge and at the side which you prefer your doors to open toward. The Flat surface of the **METAL TRACK** is the front and it faces to the room. The **PIVOT BLOCK** should be 1" from the edge of the track and loosely tighten the hex screw for now. For 4 door openings you will need to repeat this process on the opposite end of the track too.



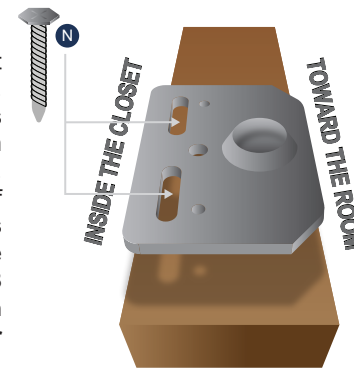
STEP 2 MOUNT UPPER TRACK

Attach **WOOD BLOCK** A straight up to header of closet opening using 2 - 2" black **WOOD SCREWS** M. Block should sit 1/4" back from the front edge of the closet door opening. With the flat side of the track facing the room push the **METAL TRACK** over the **WOOD BLOCK** for snug fit. Cut aluminum track with a hacksaw if necessary. Make sure that pivot block is positioned on the side you want the door to open towards. Loosely fasten track to the block using two **#8 SCREWS** N through the two holes on the inside of the track.



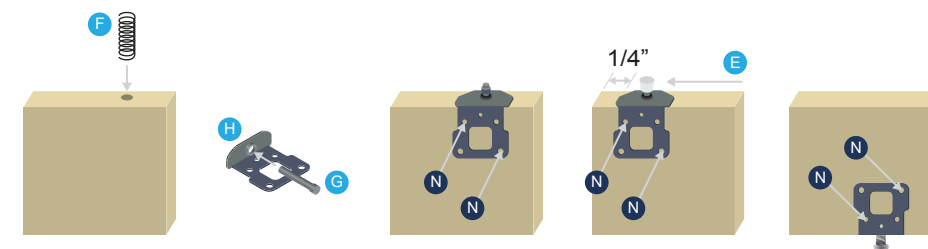
STEP 3 MOUNT FLOOR HARDWARE

Place **OAK SADDLE** C on floor, 1/4" back from closet opening front edge to align with **METAL TRACK** above. Pre-drilled holes in **OAK SADDLE** go on same side as plastic **PIVOT BLOCK**. Door opening to left, holes go on left. Door opening to the right, holes go on the right. Don't fasten the **SADDLE** to the floor until the end of installation. Lay **METAL FLOOR PLATE** D over holes drilled in **OAK SADDLE** (slotted holes in plate face inside closet opening). Fasten plate to saddle using 2 - #8 screws through slots in metal floor plate. **Do not tighten them down yet completely. We may need to adjust left or right**



STEP 4 MOUNT DOOR HARDWARE

Next open your door & lay it face down. Drop **SPRING** F into hole on top of the door; door opening to left use hole in top left & vice versa for door opening to the right. Slide rounded end of **TOP PIVOT PIN** G up through **TOP PIVOT BRACKET** H. Mount this assembly over spring hole as shown. Fasten assembly to back of door using two **#8 SCREWS** & test for correct installation by pushing the **PIVOT PIN** G into door. Pin should now be spring-loaded. Fasten **ROLLER BRACKET** E at top of door 1/4" from edge opposite of the pivot bracket using 2 - **#8 SCREWS**. Screw **ADJUSTING BOLT** I into **BOTTOM PIVOT BRACKET** J all the way up so the door would sit as low as possible. Insert this assembly into hole at bottom of door on the same side as **TOP PIVOT BRACKET** H. Fasten **BRACKET** to bottom back of door using 2 - **#8 SCREWS**



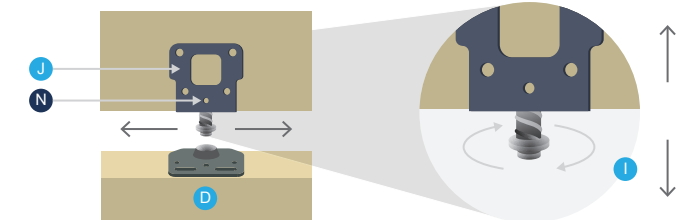
STEP 5 INSTALL DOOR

Fold doors together & stand upright. Lift at an angle to fit **PIVOT PIN** into groove/hole in **PIVOT BLOCK & ROLLER** into track (1). You may hear the spring-loaded pin "pop" into the hole. Lift to fit bottom **ADJUSTING BOLT** into cup on **METAL FLOOR PLATE** (2). Sometimes it helps to have a 2nd person down low to help find the cup. Make sure that the roller stays in the top track. Close door slowly, making sure that there is at least 3/16" clearance between edge of door & wall. If not adjust **PIVOT BLOCK** and/or **METAL FLOOR PLATE** left or right accordingly.



STEP 6 ADJUST

To adjust **HEIGHT** alignment, turn bottom **ADJUSTING BOLT** to desired height. Use 5/16" wrench to adjust screw. Lock height adjustment by screwing one **#8 SCREW** into smallest hole at back of **BOTTOM PIVOT BRACKET**. Now you can fasten the saddle permanently to the floor. For wood floors we recommend 10d finish nails, first pre-drill holes using 1/8" bit to prevent wood from splitting. Cement floors require construction adhesive. To adjust **WIDTH** alignment, fold and hold doors firmly in place and loosen hex head screws on **PIVOT BLOCK** and **METAL FLOOR PLATE**. Position doors side to side, plumb and level, for best fit and re-tighten **PIVOT BLOCK** and **METAL FLOOR PLATE**.



STEP 7 TIGHTEN, CLEAN & ENJOY

Place wrap-around Handle K approx. 39" from bottom of pivot panel. On a door that opens to the **LEFT**, the pivot panel is the one on the **LEFT**. For doors that open to the **RIGHT**, the pivot panel is the one on the **RIGHT**. Fasten it to back of door using 1 - **#8 SCREW**. Now go back and make sure everything you've left loose for the adjustments is tightened down. Aligners for 4-door units - Install 2 sets of **DOOR-TO-DOOR ALIGNERS** L on the back of each meeting panel. One set about a 1/2" up from the bottom and one set about 36" from the bottom. These will keep your doors nice and flush with each other.

